

This Quick user guide will make the installation of **DB91-RX** quick and easy. Applying these principles, you can simplify the process and save yourself extra time and effort. **For more information about the Safety precautions and the Operating environment recommendations please refer to the User Manual.**

STEP 1 **Connection**

1. Connect the device to a local network or to the Internet by a cable with an RJ-45 connector;
2. Connect the DB91-RX to the power supply.

RECOMMENDATION: Preferably, connect the device to a DHCP Server network from which DB91-RX will receive an IP address.

STEP 2 **Configuration**

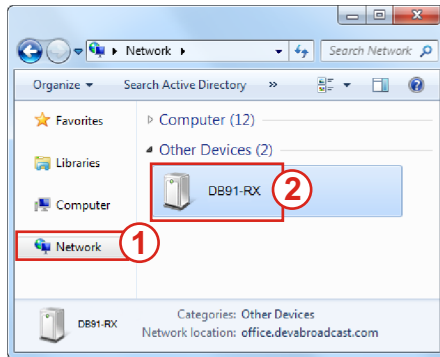
DB91-RX is controlled through a built-in WEB Server and a standard web browser can be used to monitor its status or to make some adjustments.

To operate the device you need to know its IP Address. In case you are not aware of it, you can hear it through the headphones when you turn on the device. Alternatively, use the Network discovery feature at Local networks (for reference see Step 3).

STEP 3 **Network discovery for Windows 7**

Network discovery is a network setting that defines whether your computer can see (find) other computers and devices on the network and whether other computers on the network can see your computer. By default, Windows Firewall blocks network discovery but you can enable it.

If you have already enabled this function on your computer just open a new Explorer bar and click on **(1)**. The device must be displayed.



1. Open Advanced sharing settings by clicking the Start button, and then on "Control Panel". In the search box, type "network", click "Network and Sharing Center", and then, in the left pane click "Change advanced sharing settings";
2. Select your current network profile;
3. Click **Turn on network discovery**, and then click Save changes. If you're prompted for an administrator password or confirmation, type the password or provide confirmation.
4. To access the device open a new Explorer bar and click on **(1)**. If you have successfully enabled the network discovery option, the device will be displayed. Double click on **(2)** will open a new WEB browser window requiring username and password. Default values being -Username: user or admin, Password: pass.

A successful log-in in the WEB Interface will look like this:

The main Status window contains information on the device's current status - the LED bar-graph representation of the audio sources. The interactive buttons placed over the LED bar-graphs allow the audio source to be manually changed.

If the mouse cursor is pointed at a label of an audio source, a balloon containing information for the Codec, Bit rate and Sample rate will appear (as depicted above).

The DB91-RX provides you with a protected access to the device settings. Upon pressing the Settings button, a window requiring username and password will appear.

In order to make the necessary adjustments to the device please log in as ADMINISTRATOR which will give you full control over the settings. The default values are username: *admin*, password: *pass*.

Upon entering the device's settings, you will be able to apply needed adjustments to the DB91-RX. In order the applied settings to be used press the [Save] button, placed on the bottom right part of each screen.

DB91-RX - Compact IP Audio Decoder Configuration **DEVA**
BROADCAST

IN: IP Audio 1 (POWER FM ONLINE) 10 May 2016 06:15:36 Uptime: 0d 00:05:29 Session: ∞ Logout

Main **Not Used** **Backup 2** **Backup 1** **Not Used** **Auto**

IP Audio 1 IP Audio 2 IP Audio 3 RTP MP3 Player Output

URL: demo.devabroadcast.com:9700 Decoder: Auto Gain: 2.0 dB Pre-buffer: 0.5 s User name: Password: Connection: Always ON On Demand

URL: demo.devabroadcast.com:9500 Decoder: Auto Gain: 6.1 dB Pre-buffer: 0.5 s User name: Password: Connection: Always ON On Demand

URL: Decoder: Auto Gain: 0.0 dB Pre-buffer: 0.5 s User name: Password: Connection: Always ON On Demand

Port: 5400 Mcast group: 000.000.000.000 Decoder: HE-AAC / auto (AAC) Gain: 0.0 dB Pre-buffer: 0.0 s

Save

For further information on the available options and features, please refer to the User Manual which can be found on www.devabroadcast.com/downloads, and the accompanying CD.

Thank you for choosing DEVA!

Please refer to the User manual for detailed information on how to configure and explore your device.