

Quick User Guide

DB8009-MPX

MPX & Audio Silence Monitor with
Advanced Backup Capabilities

→ BEFORE YOU USE THIS PRODUCT ←

In order to be able to enjoy all the benefits of owning your new DEVA product, please verify first that the latest software and firmware release were installed.

Visit www.devabroadcast.com/downloads for the most recent software and firmware downloads, prior the installation.

This Quick user guide will make the installation of **DB8009** quick and easy. Applying these principles, you can simplify the process and save yourself extra time and effort. **For more information about the Safety precautions and the Operating environment recommendations please refer to the User Manual.**

STEP 1

Connection

1. Install the unit on its operation place away from abnormally high RF Fields;
2. Before connecting the device to the power supply, make sure that the internal selector is in accordance with the mains supply at your location. DB8009 Power Supply Factory Settings are 115-230V, 50-60Hz AC mains ;
3. The encoder has to be connected to the local network or Internet by cable with RJ-45 connector.

As only one input at a time can be managed by the encoder, please select the preferred signal source input - either analog or digital one:

- For **Analog audio** use a cable that ends with two standard XLR jacks to connect the analog signal source to the analog audio inputs of DB8009;
- For **Digital audio** use a cable that ends with standard XLR jacks to connect the AES/EBU signal source to the digital audio input of DB8009.

STEP 2

Configuration

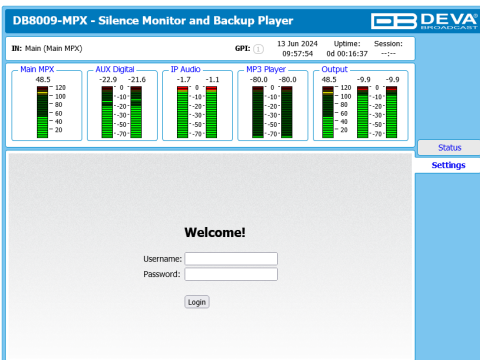
DB8009 is controlled through a built-in WEB Server and a standard Web browser can be used to monitor its status or to make some adjustments.

To operate the device you need to know its IP Address. In case you are not aware of it, you can use the Network discovery feature at Local networks (*Step 2.2*) or the front panel navigational menu (*Step 2.1*).

STEP 2.1

Manual IP Identification

1. Connect the device to the local network or to the Internet by LAN cable;
2. Using the front panel navigation menu press [OK] button to enter the device Menu;
3. Using the front panel navigation buttons find the **6.Network** > press [OK] > navigate to **6.1. Ethernet General** > press [OK] > navigate to **3. IP**;
4. A screen containing information about the **2. DHCP Mode** and the **3. IP Address** of the device will appear.
5. Open a new WEB Browser and enter the device IP address in the address field then press [Enter]. A new WEB browser with DB8009's Main window will appear.
6. To access the device's settings press [Settings], the default values are:
 - username: admin
 - password: pass



NOTE: Due to the inability of some WEB Browsers to read the IP address format displayed on the screen of the device, the numbers included in the IP Address must be written without the leading zeros. For example: **192.168.020.068** must be written as **192.168.20.68**

STEP 2.2

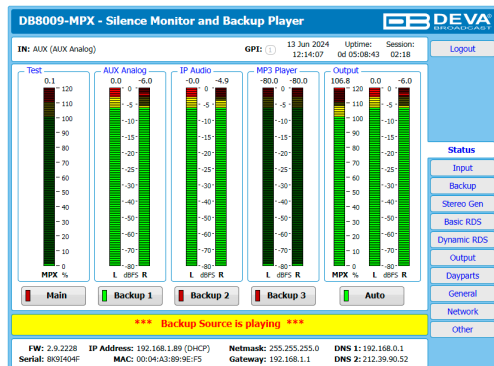
Network Discovery

1. Open Advanced sharing settings by clicking the **Start** button, and then on **"Control Panel"**. In the search box, type **"network"**, click **"Network and Sharing Center"**, and then, in the left panel click **"Change advanced sharing settings"**.
2. Select your current network profile.
3. Click **Turn on network discovery**, and then click Save changes. If you're prompted for an administrator password or confirmation, type the password or provide confirmation.
4. To access the device open a new Explorer bar and click on **Network**. If you have successfully enabled the network discovery option, the device will be displayed. Double click on **DB8009** will open a new WEB browser with the Main window.
5. To access the device's settings press [Settings], the default values are username: admin and password: pass.

NOTE: If you have already enabled this function on your computer just open a new Explorer bar and click on **Network**. The device must be displayed. If not follow the instructions from *Step 2.2*.

STEP 3

Status Window



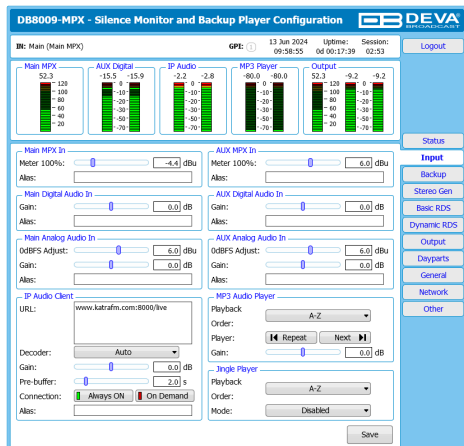
The Status screen contains information about the source levels. You can easily select the preferred audio source by using the source selection buttons. By selecting the interactive [Auto] button, the DB8009 will automatically select audio source in accordance with the applied Audio Backup Settings.

At the bottom of the control window is an information bar, gathering all the important connection parameters – Firmware Version in use, Serial Number, IP Address, and etc.

Upon change of the Web Interface screens, the main status window will resize automatically and become a constant part of each tab.

STEP 4

Input Window



The Input section allows you to apply the needed settings to the:

- Main In Meter Calibration;
- AUX MPX In Meter Calibration;
- Main Audio Input;
- AUX Audio Input;
- IP Audio Client;
- MP3 Audio Player;
- Jingle Player.

Through the use of a standard FTP client, you have the opportunity to update the backup content at will via any PC. The supported format is .mp3.

For further information on the Input settings and how the connection between the DB8009 and an FTP Client should be configured, please refer to the complete User Manual.

DB8009-MPX - Silence Monitor and Backup Player Configuration **DEVA**

IN: Main (Main MPX) GPI: 1 13 Jun 2024 09:59:12 Uptime: 0d 00:17:56 Session: 02:55 Logout

Main MPX **AUX Digital** **IP Audio** **MP3 Player** **Output**

3.1 -45.0 -45.2 -0.4 -0.5 -80.0 -80.0 3.1 -33.8 -33.8

120 0 0 0 0 120 0 0 0 0

80 -10 -10 -10 -10 80 -20 -20 -20 -20

40 -20 -20 -20 -20 40 -40 -40 -40 -40

0 -30 -30 -30 -30 0 -60 -60 -60 -60

-20 -40 -40 -40 -40 -20 -80 -80 -80 -80

-40 -50 -50 -50 -50 -40 -100 -100 -100 -100

-60 -60 -60 -60 -60 -60 -120 -120 -120 -120

-80 -70 -70 -70 -70 -80 -120 -120 -120 -120

-100 -70 -70 -70 -70 -100 -120 -120 -120 -120

-120 -70 -70 -70 -70 -120 -120 -120 -120 -120

Source Priority **Audio Loss and Recovery**

Main: Main MPX Input
 Backup 1: AUX Digital Audio Input
 Backup 2: IP Audio Client
 Backup 3: MP3 Audio Player
 GPI Forced: Not Used

Loss Th.: 0 -50.0 dB
 Loss Tout: 0 3 s
 Recover Th.: 0 -50.0 dB
 Recover Tout: 0 3 s

MPX Monitor Mode **MPX Loss and Recovery**

Mode: MPX Mono MPX Stereo

Loss Th.: 0 19 %
 Loss Tout: 0 3 s
 Recover Th.: 0 6 %
 Recover Tout: 0 3 s

Save

Status
 Input
Backup
 Stereo Gen
 Basic RDS
 Dynamic RDS
 Output
 Dayparts
 General
 Network
 Other

The backup sources priority is user-defined and can be set through the Source Priority section. If the audio from the main source disappears, the DB8009 will automatically switch to the first backup source; if it also fails, the unit will switch to the second. Once a source with higher priority is restored, the unit will switch back to it.

Audio Loss and Audio Recovery and MPX Loss and Recovery – Allow you to select the appropriate levels of loss and recovery of the audio/MPX signal. Do not forget to set the corresponding timeouts.

Monitor Mode - Defines which signal will be monitored for silence and respectively switch over.

IMPORTANT NOTE: In case of power failure, the MAIN Audio and MPX inputs will switch directly to the Audio and MPX outputs. Once the power is restored, the DB8009-MPX will resume its proper operation.

Please refer to the User manual for detailed information on how to configure and explore your device.