

## RESTORE FACTORY DEFAULTS

---

If an emergency recover is necessary, the DB8008 can Restore Factory Defaults from its non-volatile memory. The step-by-step process can be found below:

1. Disconnect/Remove all external cables, except the Mains Power.
2. Using the keyboard, navigate to `8. Device > 8.4. Factory Defaults`.
3. Press the [OK] Button and select one of the following options - `All, Keep COM, Chans`. Press [OK];
4. Press the [Down] button and then [OK] to select the `Execute` menu. Then using the [Down] button select `Yes` and press [OK].
5. The device will be returned to its factory defaults.

**WARNING:** When the device is returned to its Factory defaults, remote users would not be notified, and may not be able to communicate with device.



## Connecting DB8008

### **ANALOG AUDIO INPUTS**

---

Using a cable ending with two standard XLR connectors connect the analog signal source to the analog audio inputs of DB8008.

**WARNING:** Do not exceed the maximum input level. This may permanently damage DB8008.

### **DIGITAL AUDIO INPUT**

---

Using a cable ending with a standard XLR connectors connect the AES/EBU signal source to the digital audio input of DB8008.

**NOTE:** As only one input can be managed by the encoder at a time, please select the preferred signal source input – either analog or digital one. Selecting the preferred input can be performed under SETTINGS menu ([see “Input” on page 39](#)).

### **LAN PORT**

---

In order for the normal operation of the device to be guaranteed, it is necessary the encoder to be connected to a local network or the Internet by a cable with RJ-45 connector.

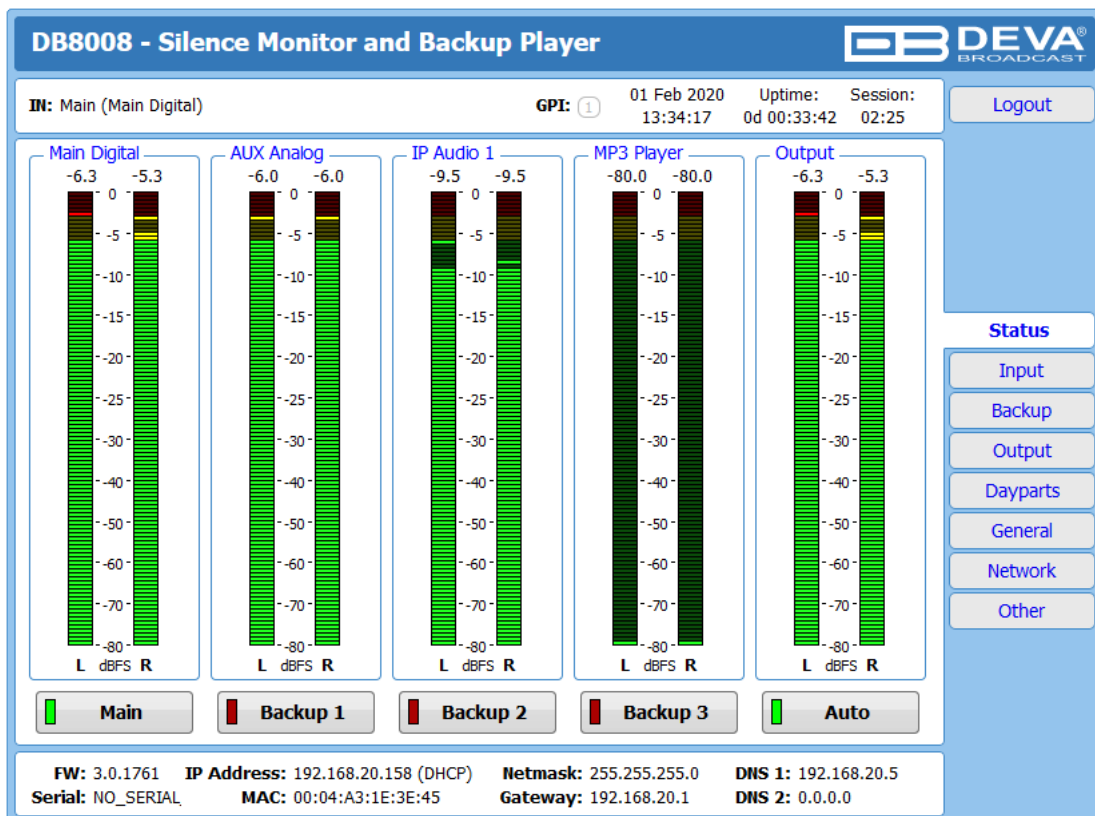
## Operation

DB8008 is controlled through a built-in WEB Server and a standard Web browser can be used to monitor its status or to make some adjustments. To operate the device you need to know its IP Address. In case you are not aware of it, you can use the Network discovery feature at Local networks or the front panel navigational menu (Manual IP Identification).

### MANUAL IP IDENTIFICATION

1. Connect the device to the local network or to the Internet by LAN cable;
2. Using the front panel navigation menu press [OK] button to enter the device Menu;
3. Using the navigation buttons find the 7. Network – press [OK] – navigate to 7. 1. Ethernet – press [OK] – navigate to 7. 1. IP;
4. A screen containing information about the 2. DHCP Mode and the 3. IP Address of the device will appear.

Open a new WEB Browser and enter the device IP address in the address field then press [Enter]. A new WEB browser with DB8008's Main window will appear.



To access the device's settings press [Settings], the default values are username: *admin* and password: *pass*.

**DB8008 - Silence Monitor and Backup Player**

**IN:** Main (Main Digital)      **GPI:** ⓘ      01 Feb 2020      Uptime:      Session:  
13:55:12      0d 00:54:37      --:--

**Main Digital**      **AUX Analog**      **IP Audio 1**      **MP3 Player**      **Output**

-4.5    -7.2      -7.2    -6.6      -7.4    -7.4      -80.0    -80.0      -4.5    -7.2

0    0      0    0      0    0      0    0      0    0

-10   -10      -10   -10      -10   -10      -10   -10      -10   -10

-20   -20      -20   -20      -20   -20      -20   -20      -20   -20

-30   -30      -30   -30      -30   -30      -30   -30      -30   -30

-50   -50      -50   -50      -50   -50      -50   -50      -50   -50

-70   -70      -70   -70      -70   -70      -70   -70      -70   -70

[Status](#)  
[Settings](#)

**Welcome!**

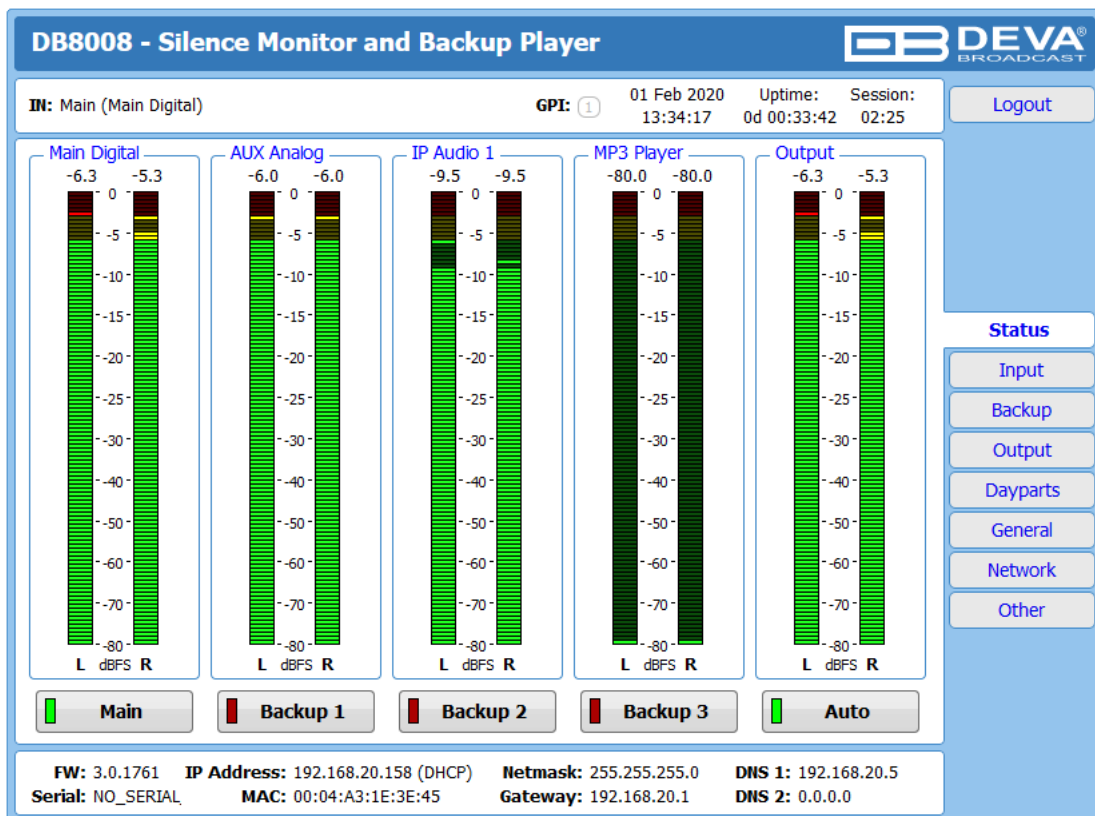
Username:

Password:

**NOTE:** Due to the inability of some WEB Browsers to read the IP address format displayed on the screen of the device, the numbers included in the IP Address must be written without the leading zeros. For example: 192.168.020.068 must be written as 192.168.20.68

## NETWORK DISCOVERY

1. Open Advanced sharing settings by clicking the Start button, and then on “Control Panel”. In the search box, type “network”, click “Network and Sharing Center”, and then, in the left panel click “Change advanced sharing settings”.
2. Select your current network profile.
3. Click Turn on network discovery, and then click Save changes. If you’re prompted for an administrator password or confirmation, type the password or provide confirmation.
4. To access the device open a new Explorer bar and click on Network. If you have successfully enabled the network discovery option, the device will be displayed. Double click on DB8008 will open a new WEB browser with the Main window.



To access the device’s settings press [Settings], the default values are username: *admin* and password: *pass*.

**DB8008 - Silence Monitor and Backup Player**

**IN:** Main (Main Digital)      **GPI:** ⓘ      01 Feb 2020      Uptime:      Session:  
13:55:12      0d 00:54:37      --:--

**Main Digital**      **AUX Analog**      **IP Audio 1**      **MP3 Player**      **Output**

-4.5    0    -7.2      -7.2    0    -6.6      -7.4    0    -7.4      -80.0    0    -80.0      -4.5    0    -7.2

-10    -20    -30    -50    -70      -10    -20    -30    -50    -70      -10    -20    -30    -50    -70      -10    -20    -30    -50    -70      -10    -20    -30    -50    -70

**Welcome!**

Username:

Password:

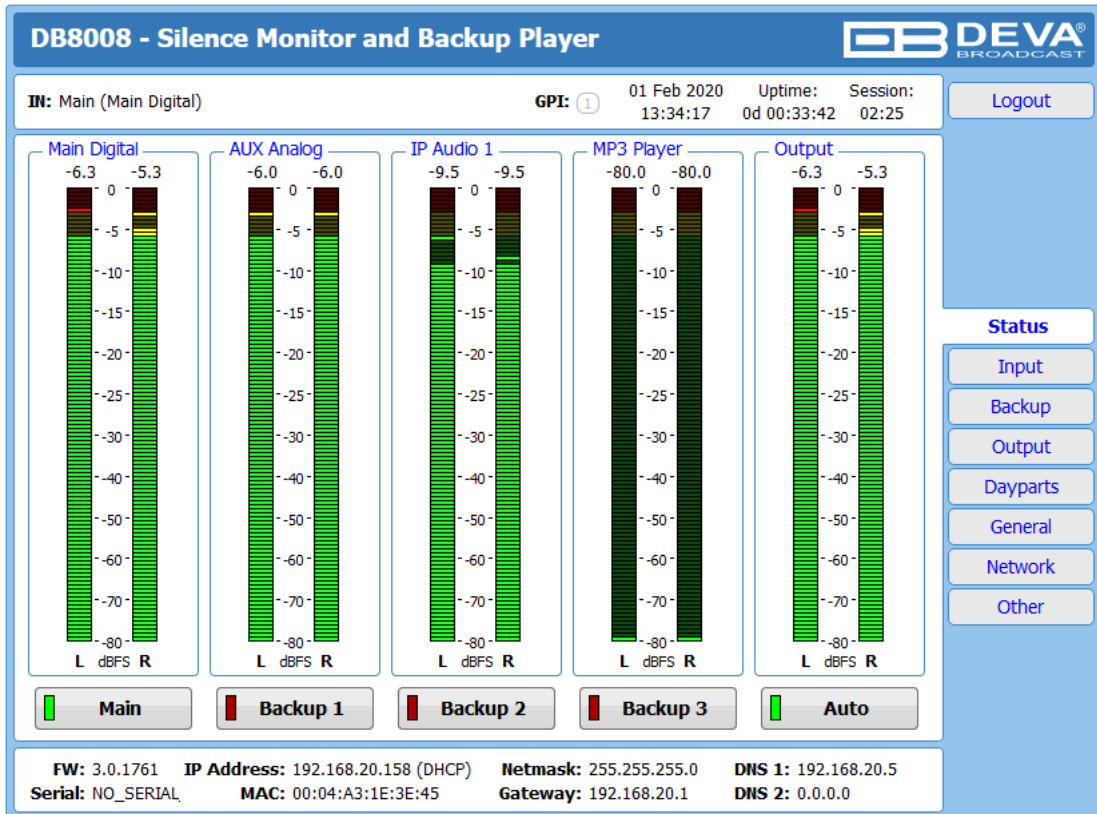
[Status](#)

[Settings](#)

**NOTE:** If you have already enabled this function on your computer just open a new Explorer bar and click on Network. The device must be displayed. If not follow the instructions described above.

## DB8008 WEB interface menu pages

### STATUS



The Status screen contains information about the source levels. You can easily select the preferred audio source by using the source selection buttons.

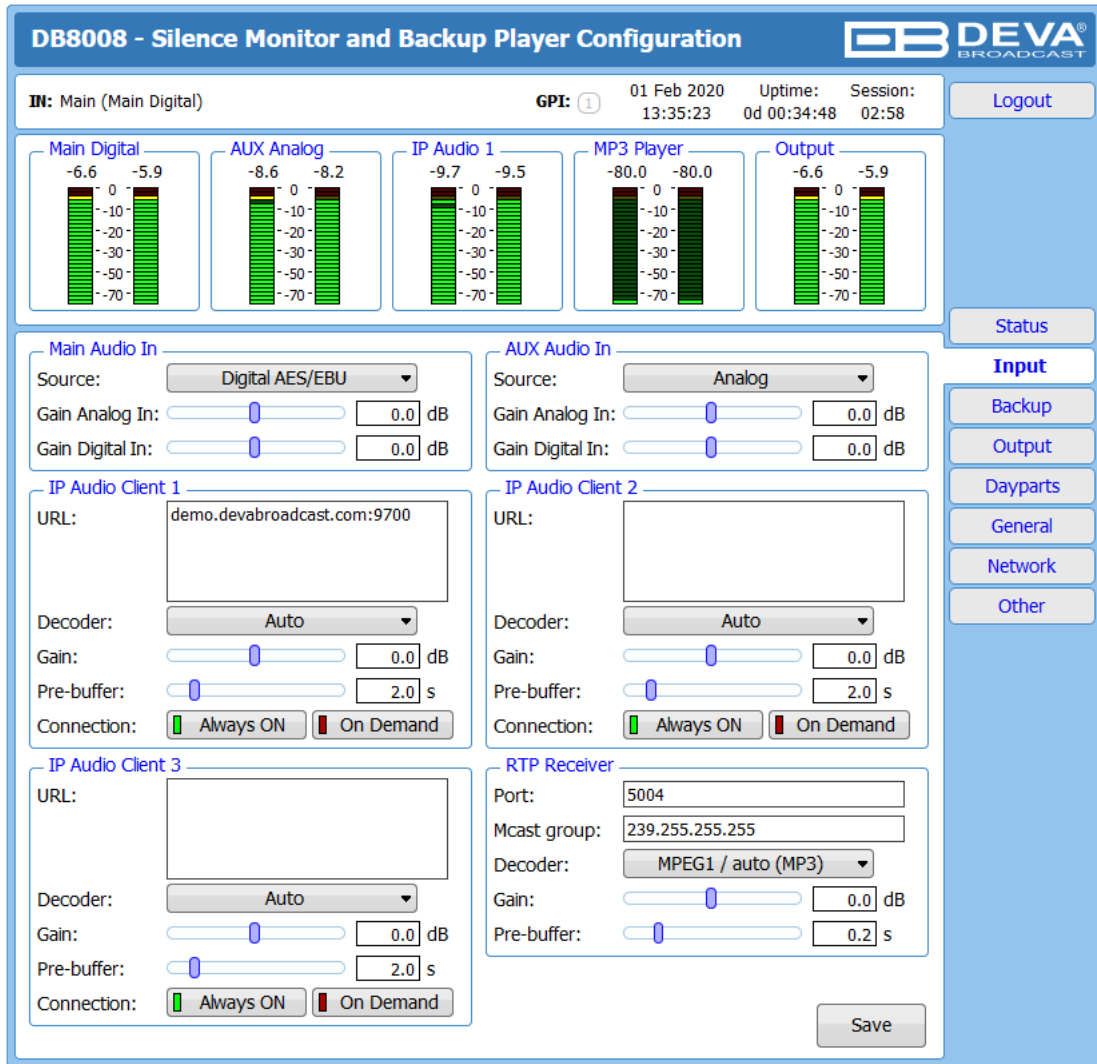
By selecting the interactive [Auto] button, the DB8008 will automatically select audio source in accordance with the applied Audio Backup Settings.

At the bottom of the control window is an information bar, gathering all the important connection parameters – Firmware Version in use, Serial Number, IP Address, and etc.

Upon change of the Web Interface screens, the main status window will resize automatically and become a constant part of each tab. Thus, allowing reading at a glance of all the mandatory parameters.

If a Backup Source is currently active, a warning message will indicate it.

# INPUT



**DB8008 - Silence Monitor and Backup Player Configuration**

IN: Main (Main Digital)    GPI: ①    01 Feb 2020 13:35:23    Uptime: 0d 00:34:48    Session: 02:58    Logout

**Main Digital**    -6.6    -5.9    **AUX Analog**    -8.6    -8.2    **IP Audio 1**    -9.7    -9.5    **MP3 Player**    -80.0    -80.0    **Output**    -6.6    -5.9

**Main Audio In**  
 Source: Digital AES/EBU  
 Gain Analog In: 0.0 dB  
 Gain Digital In: 0.0 dB

**AUX Audio In**  
 Source: Analog  
 Gain Analog In: 0.0 dB  
 Gain Digital In: 0.0 dB

**IP Audio Client 1**  
 URL: demo.devabroadcast.com:9700  
 Decoder: Auto  
 Gain: 0.0 dB  
 Pre-buffer: 2.0 s  
 Connection: Always ON

**IP Audio Client 2**  
 URL:  
 Decoder: Auto  
 Gain: 0.0 dB  
 Pre-buffer: 2.0 s  
 Connection: Always ON

**IP Audio Client 3**  
 URL:  
 Decoder: Auto  
 Gain: 0.0 dB  
 Pre-buffer: 2.0 s  
 Connection: Always ON

**RTP Receiver**  
 Port: 5004  
 Mcast group: 239.255.255.255  
 Decoder: MPEG1 / auto (MP3)  
 Gain: 0.0 dB  
 Pre-buffer: 0.2 s

Save

Navigation: Status, Input, Backup, Output, Dayparts, General, Network, Other

## Main and AUX Input

- **Source** – Select input type: Analog, Digital AES/EBU, Digital S/DIF or Digital Optical
- **Gain Analog In** – Audio gain adjust from -10 to 10 dB. Default value is 0dB.
- **Gain Digital In** – Audio gain adjust from -10 to 10 dB. Default value is 0dB.

## IP Audio Client

Set **Decoder** from the drop-down menu, and **URL** of the stream server.

- **Decoder** (+ Sample rate) – Select decoder and sample rate. It can be set to **Auto** or set manually to preferred decoder and sample rate. In Auto Mode, the DB8008 will adjust decoder and sample rate, using stream supplied information. For **PCM (uncompressed)** sample rate can be **32, 44.1** or **48** kHz. For **MPEG1** the sample rate is determined automatically from the stream.
- **Pre-buffer** – The minimum amount of time in which the unit will pre-buffer before playing starts in order for problems with the connection to be prevented.
- **Connection** - Select connection type. **On Demand** will instruct IP Audio Client to establish a connection only when it is the current audio source, otherwise it will stay disconnected. This mode is useful for metered Internet connections. When set to **Always ON** the IP Audio Client will keep the connection active even when it is not the current source.

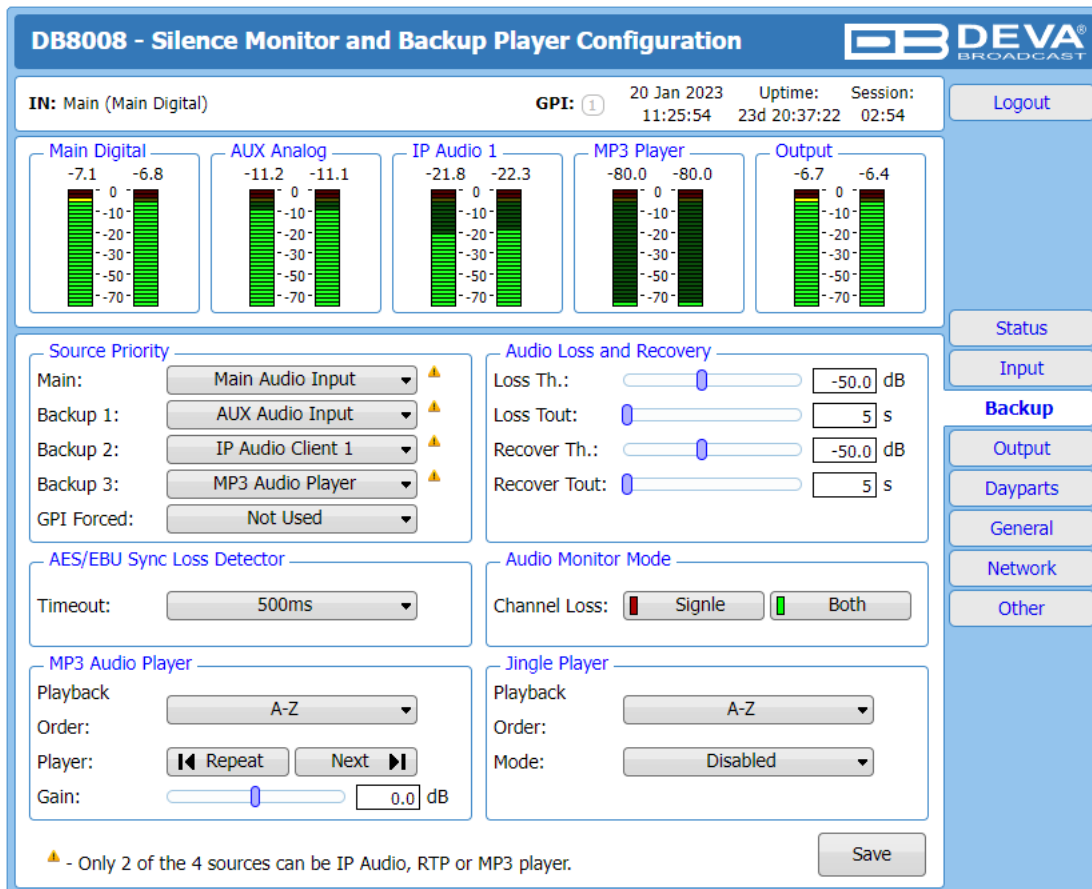
**NOTE: On Demand** does not apply if IP Audio Client is the Main backup priority. In this case it will work in **Always ON** mode.

**NOTE:** If Silence is detected while in **On Demand** mode, DB8008 will switch to the next backup priority and will disconnect the IP Audio Client connection. It will not return to IP Audio Client again before it switches to Main first.

**WHEN APPLYING NEW SETTINGS** – In order new settings to take effect, it is necessary to press the [Save] button. Please keep in mind that some of the new settings can reset DB8008.



## BACKUP



The screenshot displays the configuration page for the DB8008 unit. At the top, it shows the unit name 'DB8008 - Silence Monitor and Backup Player Configuration' and the DEVA BROADCAST logo. Below this, there are status indicators for 'IN: Main (Main Digital)', 'GPI: 1', and system information including the date '20 Jan 2023', 'Uptime: 23d 20:37:22', and 'Session: 02:54'. A 'Logout' button is located in the top right corner.

The main area is divided into several sections:

- Audio Levels:** Five vertical level meters are shown for 'Main Digital' (levels: -7.1, -6.8), 'AUX Analog' (levels: -11.2, -11.1), 'IP Audio 1' (levels: -21.8, -22.3), 'MP3 Player' (levels: -80.0, -80.0), and 'Output' (levels: -6.7, -6.4).
- Source Priority:** A section with dropdown menus for 'Main' (Main Audio Input), 'Backup 1' (AUX Audio Input), 'Backup 2' (IP Audio Client 1), 'Backup 3' (MP3 Audio Player), and 'GPI Forced' (Not Used).
- Audio Loss and Recovery:** Sliders and input fields for 'Loss Th.: -50.0 dB', 'Loss Tout: 5 s', 'Recover Th.: -50.0 dB', and 'Recover Tout: 5 s'.
- AES/EBU Sync Loss Detector:** A dropdown menu for 'Timeout: 500ms'.
- Audio Monitor Mode:** Radio buttons for 'Channel Loss: Single' and 'Both'.
- MP3 Audio Player:** Controls for 'Playback' (A-Z), 'Order', 'Player' (Repeat, Next), and 'Gain: 0.0 dB'.
- Jingle Player:** Controls for 'Playback' (A-Z), 'Order', and 'Mode: Disabled'.

A warning icon and text at the bottom left state: '- Only 2 of the 4 sources can be IP Audio, RTP or MP3 player.' A 'Save' button is located at the bottom right of the configuration area. On the right side of the interface, there is a vertical menu with buttons for 'Status', 'Input', 'Backup', 'Output', 'Dayparts', 'General', 'Network', and 'Other'.

The backup sources priority is user-defined and can be set through the Source Priority section. If the audio from the main source disappears, the DB8008 will automatically switch to the first backup source; if it also fails, the unit will switch to the second. Once a source with higher priority is restored, the unit will switch back to it. The GPI Forced option will force selected audio input (Main, Backup 1 or Backup 2) via GPI pin.

### Audio Loss and Audio Recovery

Allow you to select the appropriate levels of loss and recovery of the audio signal. Do not forget to set the corresponding timeouts.

### Audio Monitor Mode

Defines which channel will be monitored for silence and respectively switch over. The following options are available:

- **Single** – Loss is triggered if one of the channels is below the threshold. Recover is triggered when both channels are above the threshold.
- **Both** – Loss is triggered if both channels are below the threshold. Recover is triggered when one of channels is above the threshold.

### MP3 Audio Player

The Playback Order can be changed from here. The following options are available: A-Z, Z-A, Shuffle, Playlist, and Shuffled Playlist. Information on the used and available SD card storage respectively, could also be found in this section. [Repeat] and [Next] button to navigate through the playlist if need be, are also available.

### **MP3 Files Upload via FTP**

Through the use of a standard FTP client, you have the opportunity to update the backup content at will via any PC. The supported format is .mp3. An important requirement for the MP3 Player configuration is that all MP3 files should be stored in a folder named Audio (no sub-folders are allowed). The folder should be located in the root of the SD Card. The playlist file must be named playlist.m3u.

### **Jingle Player**

This option is available only when the audio source is set to MP3 Audio Player. The Jingle player is designed for playing jingles (speech and music) at different intervals specified by the user. The intervals are counted by songs. From the Mode drop down menu the number of songs after which a jingle should be played is chosen. The Playback Order is also user-defined. Generally speaking, the Jingle Player allows you to make a simple radio play out.

### **Jingle Files Upload via FTP**

Through the use of a standard FTP client, you have the opportunity to update the backup content at will via any PC. The supported format is .mp3. An important requirement is that all jingles should be stored in a folder named 'Jingles' (no subfolders are allowed). The folder should be located in the root of the SD Card. The playlist file must be named playlist.m3u. For information on how the connection between the DB8008 and an FTP Client should be configured, please refer to ["Download files via FTP" on page 56](#).

### **How can a playlist file be made?**

1. All backup audio files, and the play list must be located in a single folder named Audio.
2. Use a plain text editor to create a file named playlist.m3u.
3. The file should be stored in the same directory where the MP3 files are (folder Audio);
4. The play list should contain only the names of the files, without path. For example: Track1.mp3
5. Each track name should be on a new line.
6. The song titles should be written in the order that should be played.

**WHEN APPLYING NEW SETTINGS** – In order new settings to take effect, it is necessary to press the [Save] button. Please keep in mind that some of the new settings can reset DB8008.

## OUTPUT

**DB8008 - Silence Monitor and Backup Player Configuration**

IN: Main (Main Digital)      GPI: ①      20 Jan 2023      Uptime:      Session:  
12:38:13      23d 21:49:41      02:56      Logout

**Main Digital**      **AUX Analog**      **IP Audio 1**      **MP3 Player**      **Output**

**Analog Audio**      **IP Voice Announcement**

Level:  dB      Enable:  Enabled  Disabled

**Digital Audio**      **GPO 1**

Enable:  Enabled  Disabled      Type: Active High

Sample rate: 48 kHz      Pulse time:  sec

**GPO 2**      **GPO 3**

Type: Active High      Type: Active High

Pulse time:  sec      Pulse time:  sec

Save

Status  
Input  
Backup  
Output  
Dayparts  
General  
Network  
Other

### Analog Audio

- set the level of the Analog Audio output (in dBu).

### Digital Audio

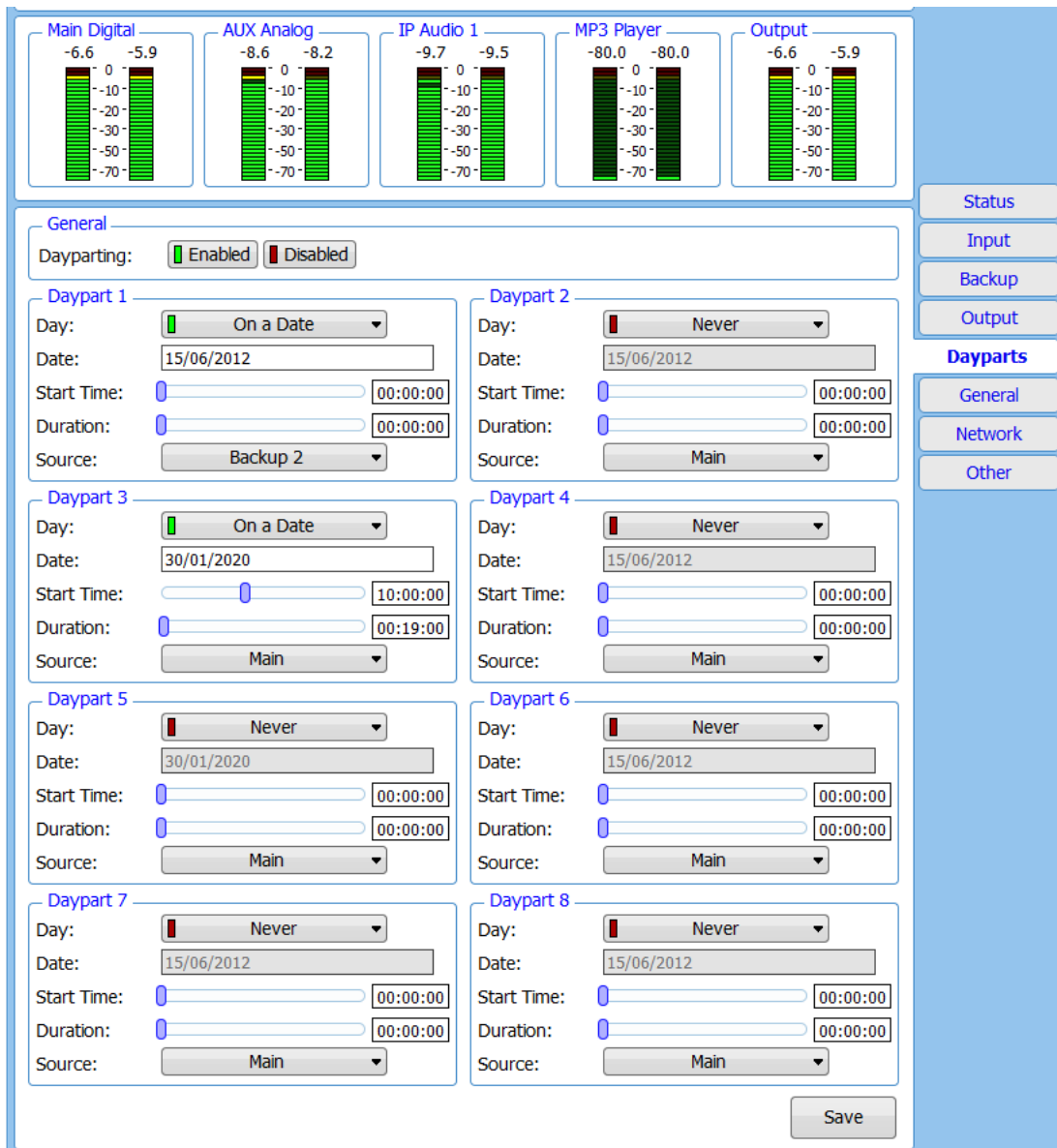
- enable or disable the Digital Audio output.

### IP Voice Announcement

- Enables or disables the IP Voice Announcement option. By default and to ease the set-up process the option is enabled. Once the set-up process is completed, it is recommended the option to be disabled. Otherwise, the IP Voice Announcement will continue to be played.

**WHEN APPLYING NEW SETTINGS** – In order new settings to take effect, it is necessary to press the [Save] button. Please keep in mind that some of the new settings can reset DB8008.

## DAYPARTS



Dayparting is the practice of dividing the day into several parts, during which a different type of audio preset to be used for the audio processing. This function will allow a processing pattern based on the radio's timetable to be made.

Generally enable the Dayparts function in order to use it. Please bear in mind that if the option is generally disabled the function will not be used, nevertheless the applied settings in sections Daypart 1 to Daypart 8.

There are nine positions at your disposal that can be set. The settings to be applied for each of them are identical:

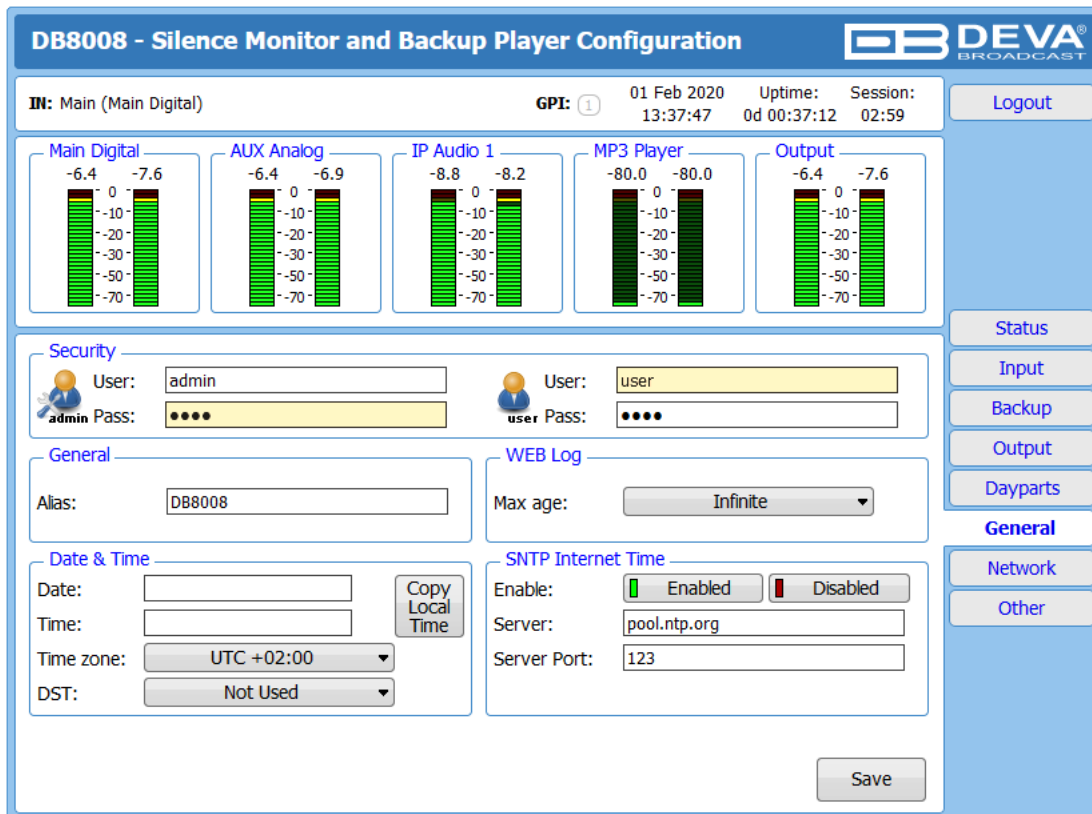
1. Select Daypart trigger day form the drop-down menu. It can be an exact date, a day of the week or every day;
2. Set the Start Time and Duration;
3. To finalize the setup, select the preset that should be used during this time period.

Repeat the same procedure for each of the positions that should be used.

**NOTE:** It is recommended the unused dayparts to be set to Never. Also, please note that if the Weekday is set to Never the relative daypart will not be used.

**WHEN APPLYING NEW SETTINGS** – In order new settings to take effect, it is necessary to press the [Save] button. Please keep in mind that some of the new settings can reset DB8008.

## GENERAL



DB8008 provides you with protected access to the device settings. You can choose between two types of log in.

- As an ADMINISTRATOR – It will give you full control over the device's settings;
- As a USER – that will allow you to just monitor the device, while all the settings remain locked.

In order for the security of DB8008 to be enhanced, new username and password could be set from the Security section.

By choice, you can change the name of the device (General section). Later on, it will be used as a title name on all WEB pages. Customizing the name will make the device more recognizable.

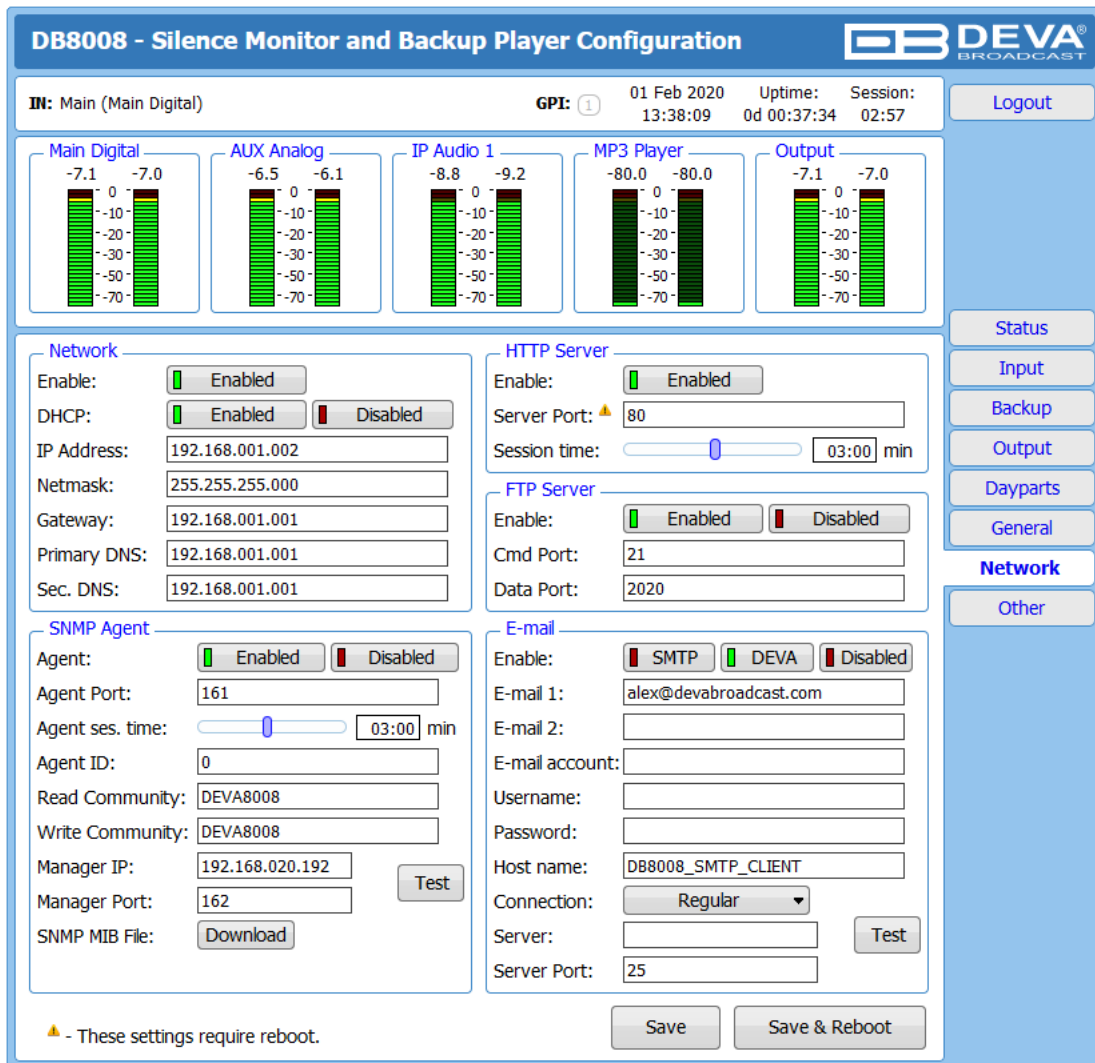
**WEB Log** – the maximum storage time of the log files is chosen from here. Log files older than the specified will be permanently deleted.

**Date & Time** – used for manually determining the current date and time. [Copy Local Time] button will set the Date & Time to correspond to that of your computer.

**SNTP Internet Time** – Synchronizes automatically DB8008's clock time to a millisecond with the Internet time server. Enable this function in order to use it (Specifying the server closest to your location will improve the accuracy).

**WHEN APPLYING NEW SETTINGS** – In order new settings to take effect, it is necessary to press the [Save] button. Please keep in mind that some of the new settings can reset DB8008.

## NETWORK



**DB8008 - Silence Monitor and Backup Player Configuration**

DEVA BROADCAST

III: Main (Main Digital)      GPI: ①      01 Feb 2020      Uptime:      Session:  
 13:38:09      0d 00:37:34      02:57      Logout

**Main Digital**      **AUX Analog**      **IP Audio 1**      **MP3 Player**      **Output**

**Network**

Enable:  Enabled

DHCP:  Enabled       Disabled

IP Address: 192.168.001.002

Netmask: 255.255.255.000

Gateway: 192.168.001.001

Primary DNS: 192.168.001.001

Sec. DNS: 192.168.001.001

**HTTP Server**

Enable:  Enabled

Server Port: 80

Session time: 03:00 min

**FTP Server**

Enable:  Enabled       Disabled

Cmd Port: 21

Data Port: 2020

**SNMP Agent**

Agent:  Enabled       Disabled

Agent Port: 161

Agent ses. time: 03:00 min

Agent ID: 0

Read Community: DEVA8008

Write Community: DEVA8008

Manager IP: 192.168.020.192      Test

Manager Port: 162

SNMP MIB File: Download

**E-mail**

Enable:  SMTP       DEVA       Disabled

E-mail 1: alex@devabroadcast.com

E-mail 2:

E-mail account:

Username:

Password:

Host name: DB8008\_SMTP\_CLIENT

Connection: Regular

Server:

Server Port: 25      Test

Save      Save & Reboot

⚠ - These settings require reboot.

Status  
 Input  
 Backup  
 Output  
 Dayparts  
 General  
**Network**  
 Other

### Network

The network addresses could be set manually (static IP) or automatically via a DHCP Server. To set static IP, Netmask, Gateway and DNS addresses, the DHCP should be disabled. In order for the built-in DHCP client to be activated, the function should be enabled. When the DHCP client is activated, all assigned values will be shown in the relevant fields on the “Status Screen”. If due to any reason, the DHCP procedure cannot be completed, DB8008 will use Auto IP and will generate an IP Address.

### E-mail

Enter the desired alarm recipients in E-mail 1 and/or E-mail 2 fields. Fill in your e-mail account settings: Sender, Username and Password, Server, Server Port and Connection Type. If you experience difficulties in the set-up, or would like to use DEVA account for sending of alarm email notifications, press the [DEVA] button option, and complete the recipient emails (E-mail 1 and E-mail 2) only. The other fields must be left blank, otherwise the email notification option will not be working. Even though using the DEVA account eases the set-up process, we recommend user account to be used for sending of email notifications, and the DEVA account for test purposes. When using DEVA account, please note that the stable 24/7 connection depends on the mail service provider and cannot be guaranteed. We recommend you to use the [Test] button and generate a test e-mail, which upon success will be delivered to the specified E-mail 1 and/or E-mail 2. Example of Test E-mail Message:

DB8009 Test Message.  
Please do not reply to this e-mail.

### **HTTP Server**

Enable/Disable the HTTP Server. Specify the Server Port and Session Timeout.

### **FTP Server**

Enable/Disable the FTP Server. Specify the Command and Data Ports to be used. For information on how the connection between the DB8009 and an FTP Client should be configured, please refer to [“Download files via FTP” on page 56](#).

### **SNMP Agent**

Specify Agent ID, Agent Port, Read/Write Communities, Manager IP, Manager Port and Agent Session Time.

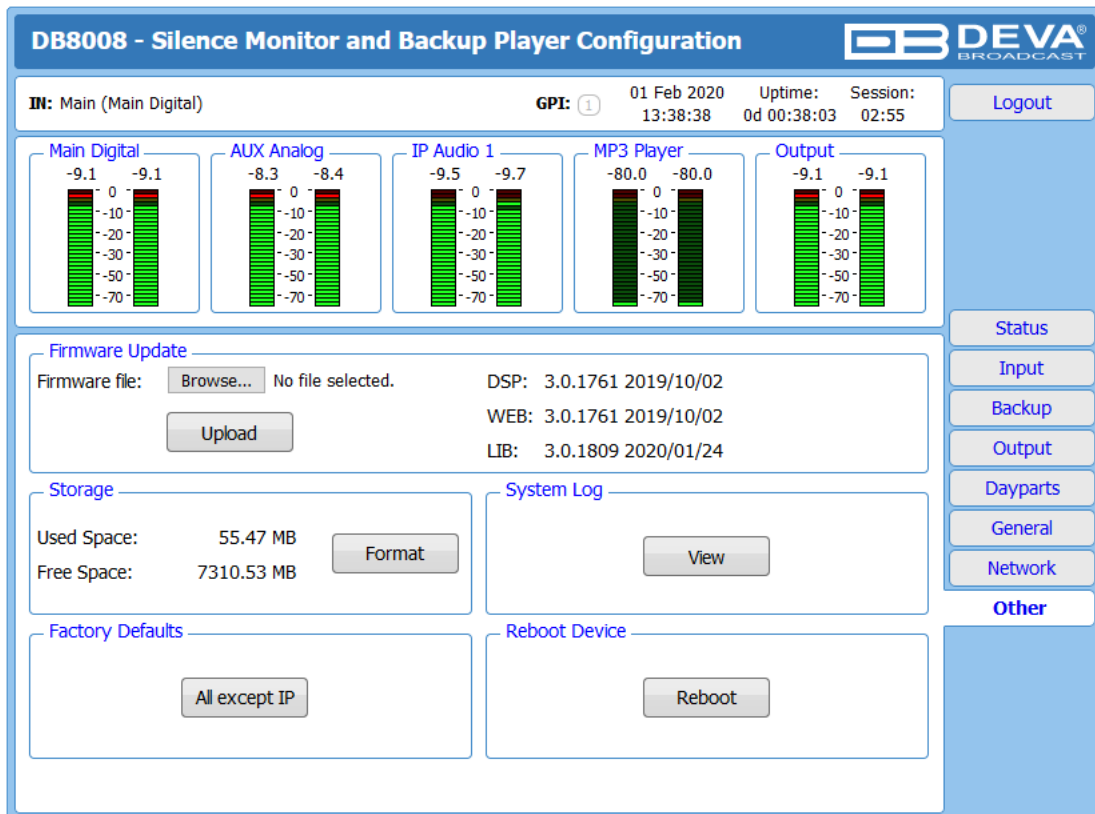
*Agent* – enables/disables SNMP Agent.

*Agent ID* – is used for identification of the device among others, when an SNMP notification is being sent. Once all needed settings are applied, use the Test button to generate a test notification, which upon success will be received by the SNMP Manager. Press the [Download] button to download the latest available DB8008 SNMP MIB file.

**NOTE:** The MIB file may vary from one firmware revision to another. Downloading this file from the device, guarantees that you have the proper MIB file.

**WHEN APPLYING NEW SETTINGS** – In order new settings to take effect, it is necessary to press the [Save] button. Please keep in mind that some of the new settings can reset DB8008.

## OTHER



The screenshot displays the configuration page for the DB8008 device. At the top, it shows the device name 'DB8008 - Silence Monitor and Backup Player Configuration' and the DEVA BROADCAST logo. Below this, there is a header with 'IN: Main (Main Digital)', 'GPI: 1', the date '01 Feb 2020', 'Uptime: 13:38:38', and 'Session: 0d 00:38:03 02:55'. A 'Logout' button is located in the top right corner.

The main content area is divided into several sections:

- Level Meters:** Five vertical level meters are shown, each with a red bar at the top and a green bar below. The values are: Main Digital (-9.1, -9.1), AUX Analog (-8.3, -8.4), IP Audio 1 (-9.5, -9.7), MP3 Player (-80.0, -80.0), and Output (-9.1, -9.1).
- Firmware Update:** This section includes a 'Firmware file:' field with a 'Browse...' button and the text 'No file selected.'. Below it is an 'Upload' button. To the right, the following version numbers are listed: DSP: 3.0.1761 2019/10/02, WEB: 3.0.1761 2019/10/02, and LIB: 3.0.1809 2020/01/24.
- Storage:** Shows 'Used Space: 55.47 MB' and 'Free Space: 7310.53 MB'. A 'Format' button is present.
- System Log:** Includes a 'View' button.
- Factory Defaults:** Features an 'All except IP' button.
- Reboot Device:** Includes a 'Reboot' button.

On the right side of the interface, there is a vertical menu with buttons for 'Status', 'Input', 'Backup', 'Output', 'Dayparts', 'General', 'Network', and 'Other'.

### Firmware Update

To update the device firmware, select the new firmware file. After having pressed the [Upload] button, a dialog window will appear. Confirm the firmware update and wait for the process to complete.

### Storage

Information about the device storage space is found in this section. The internal storage could be deleted by pressing the [Format] button.

### Factory Defaults

To restore DB8008 to its Factory Defaults press the [All except IP] button. A new window will appear - confirm that you want to restore the factory defaults and wait for the process to be completed. On completion of the process, the settings should have the proper default values, except for the Network settings (IP Address) - they will be preserved.

**NOTE:** When the device is returned to its factory defaults, the DB8008 will automatically use MP3 as current audio source. The device will return to its main audio source once it is restored.

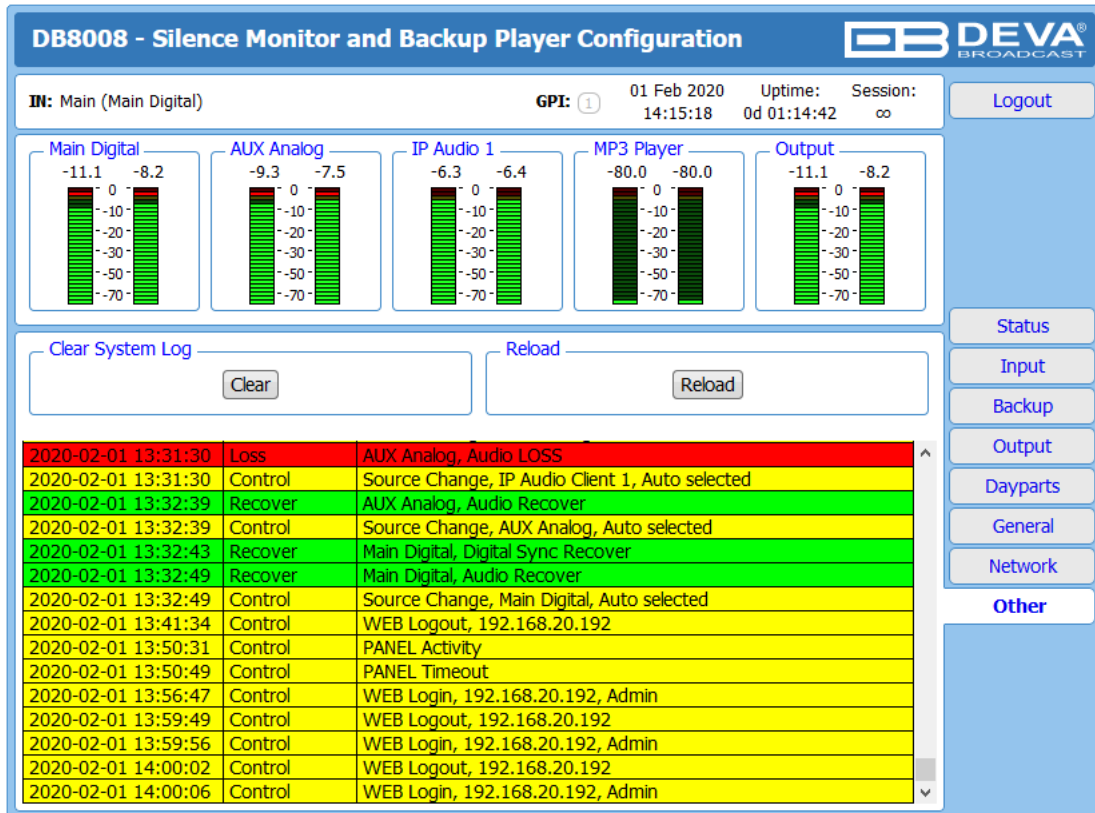
### Reboot

To start Rebooting of DB8008, press the [Reboot] button. A dialog warning window will appear. Confirm that you want to reboot the device and wait for the process to be completed.



## System Log

By pressing the [View] button, all recorded in the system log information will be depicted on the screen. Pressing the [Clear] button will delete all recorded system log information. [Reload] will reload the data.



**DB8008 - Silence Monitor and Backup Player Configuration**

**IN:** Main (Main Digital)      **GPI:** ⓘ      01 Feb 2020      Uptime:      Session:  
 14:15:18      0d 01:14:42      ∞      [Logout](#)

**Main Digital**      **AUX Analog**      **IP Audio 1**      **MP3 Player**      **Output**  
 -11.1   -8.2      -9.3   -7.5      -6.3   -6.4      -80.0   -80.0      -11.1   -8.2

2020-02-01 13:31:30	Loss	AUX Analog, Audio LOSS
2020-02-01 13:31:30	Control	Source Change, IP Audio Client 1, Auto selected
2020-02-01 13:32:39	Recover	AUX Analog, Audio Recover
2020-02-01 13:32:39	Control	Source Change, AUX Analog, Auto selected
2020-02-01 13:32:43	Recover	Main Digital, Digital Sync Recover
2020-02-01 13:32:49	Recover	Main Digital, Audio Recover
2020-02-01 13:32:49	Control	Source Change, Main Digital, Auto selected
2020-02-01 13:41:34	Control	WEB Logout, 192.168.20.192
2020-02-01 13:50:31	Control	PANEL Activity
2020-02-01 13:50:49	Control	PANEL Timeout
2020-02-01 13:56:47	Control	WEB Login, 192.168.20.192, Admin
2020-02-01 13:59:49	Control	WEB Logout, 192.168.20.192
2020-02-01 13:59:56	Control	WEB Login, 192.168.20.192, Admin
2020-02-01 14:00:02	Control	WEB Logout, 192.168.20.192
2020-02-01 14:00:06	Control	WEB Login, 192.168.20.192, Admin

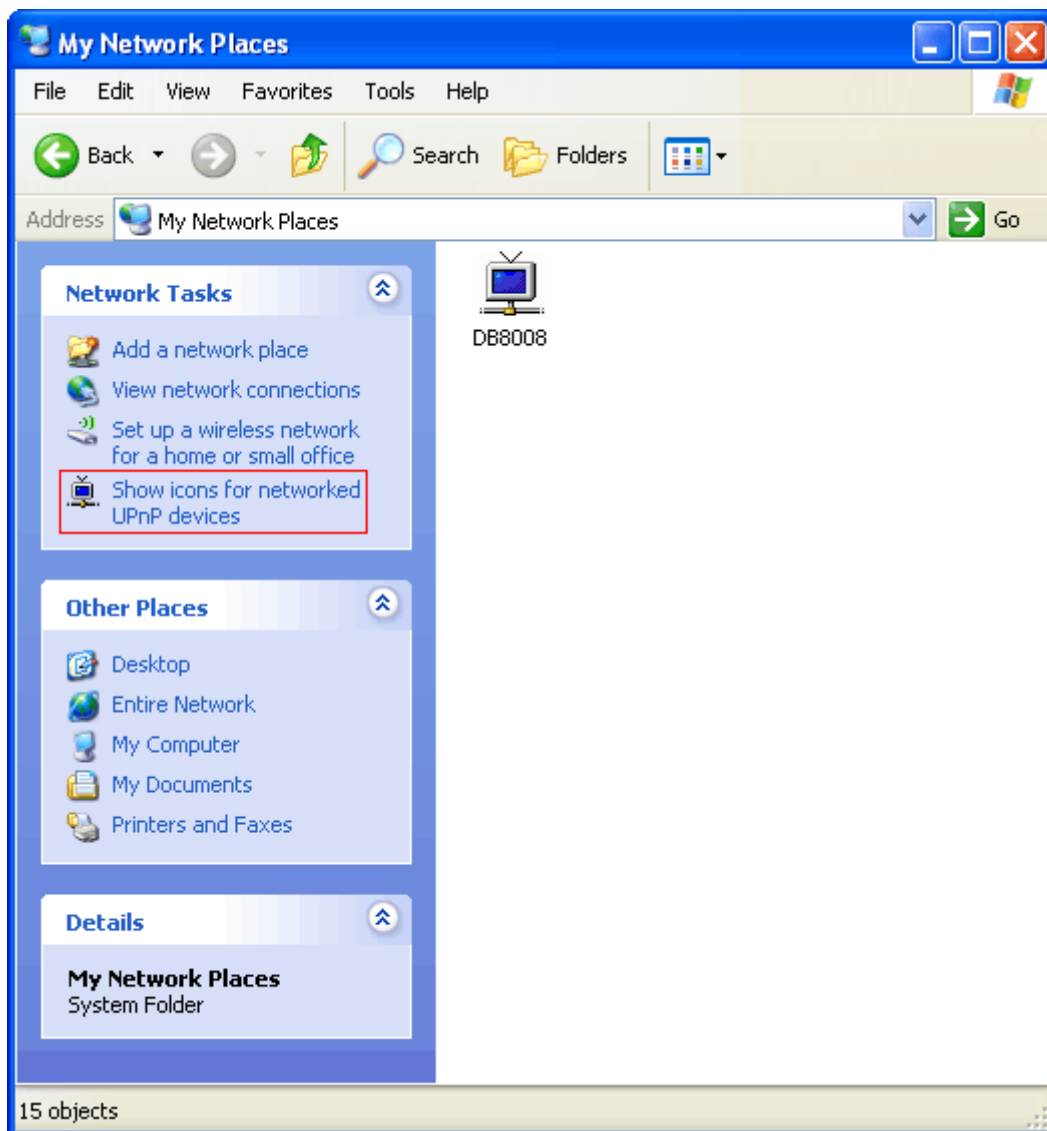
[Status](#)      [Input](#)      [Backup](#)      [Output](#)      [Dayparts](#)      [General](#)      [Network](#)      [Other](#)

To go back to the Other section, press the back button of your web browser.

## UPnP discovery in Local Networks

DB8008 implements UPnP which lets you easily find it in your local network. For this purpose your system should have UPnP enabled ([see “UPnP Activation” on page 51](#)). To discover the device follow the next steps:

- Connect the device to the local network.
- Open “My Network Places” on your computer.
- Find the decoder’s icon.
- Double click it to open the DB8008 web interface.

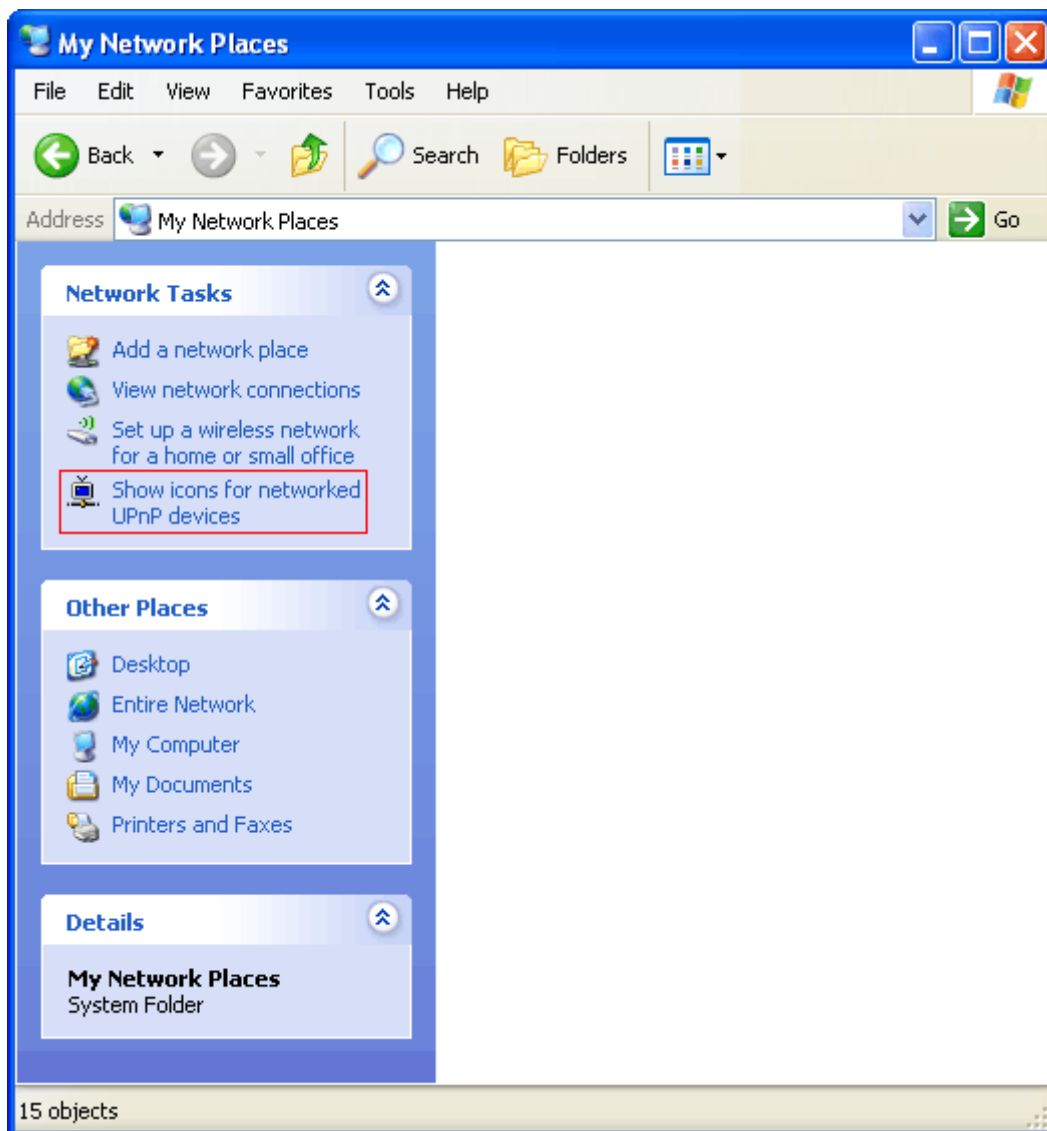


## UPnP Activation

**NOTE:** The following explanations apply to Windows XP SP2 or SP3! If you use another operating system, please contact your system administrator.

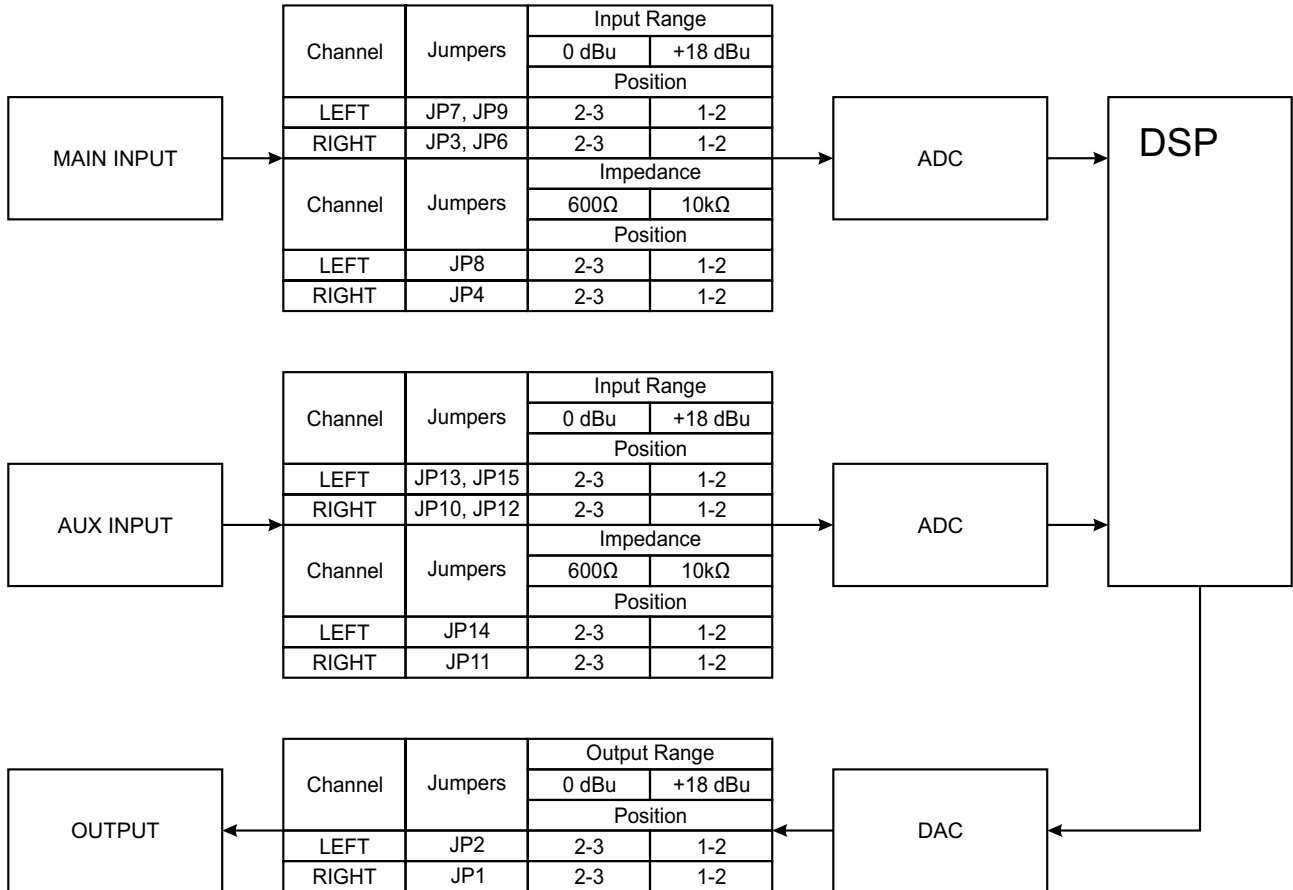
Open “My Network Places”. If you have the caption displayed in the picture below, click on it. Then click “Yes” and wait for the process to complete. Now you should see the device. If you still have troubles finding the device, please see

<http://support.microsoft.com/kb/941206> or contact your system administrator.

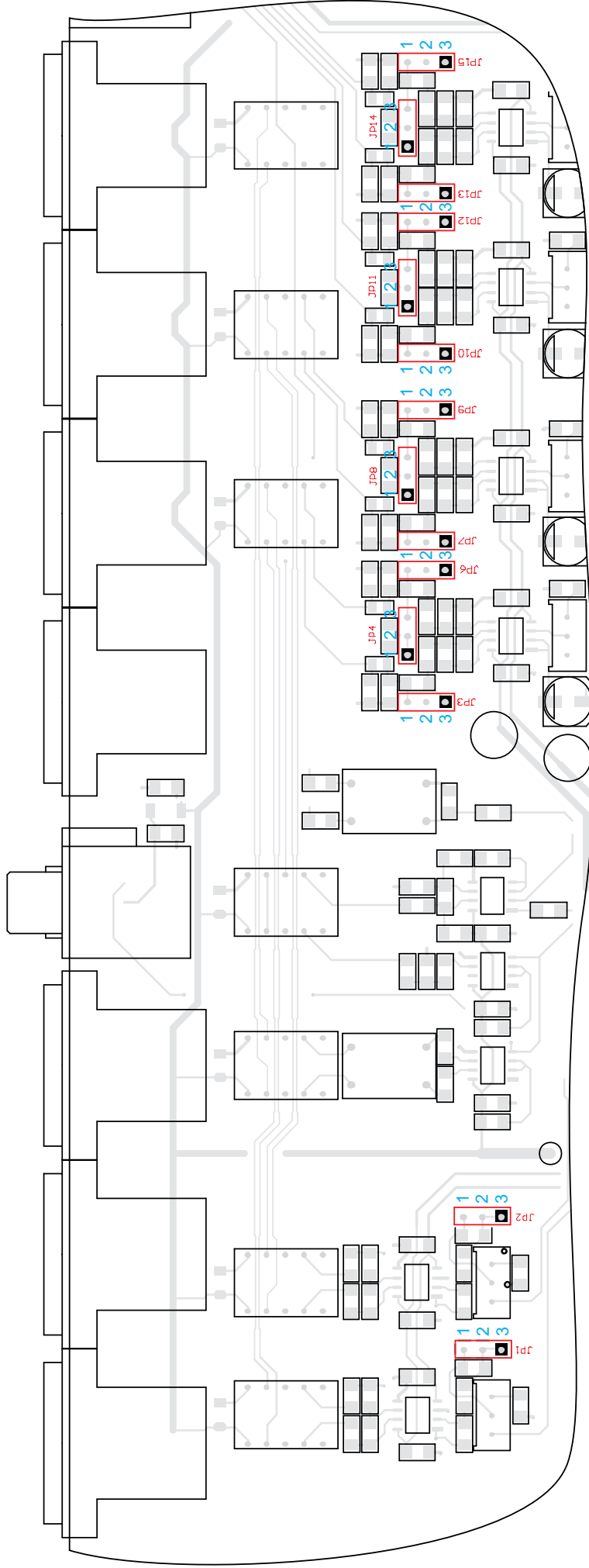


## APPENDIX A

### LIST OF DB8008 JUMPER SETTINGS FOR ANALOG SIGNALS



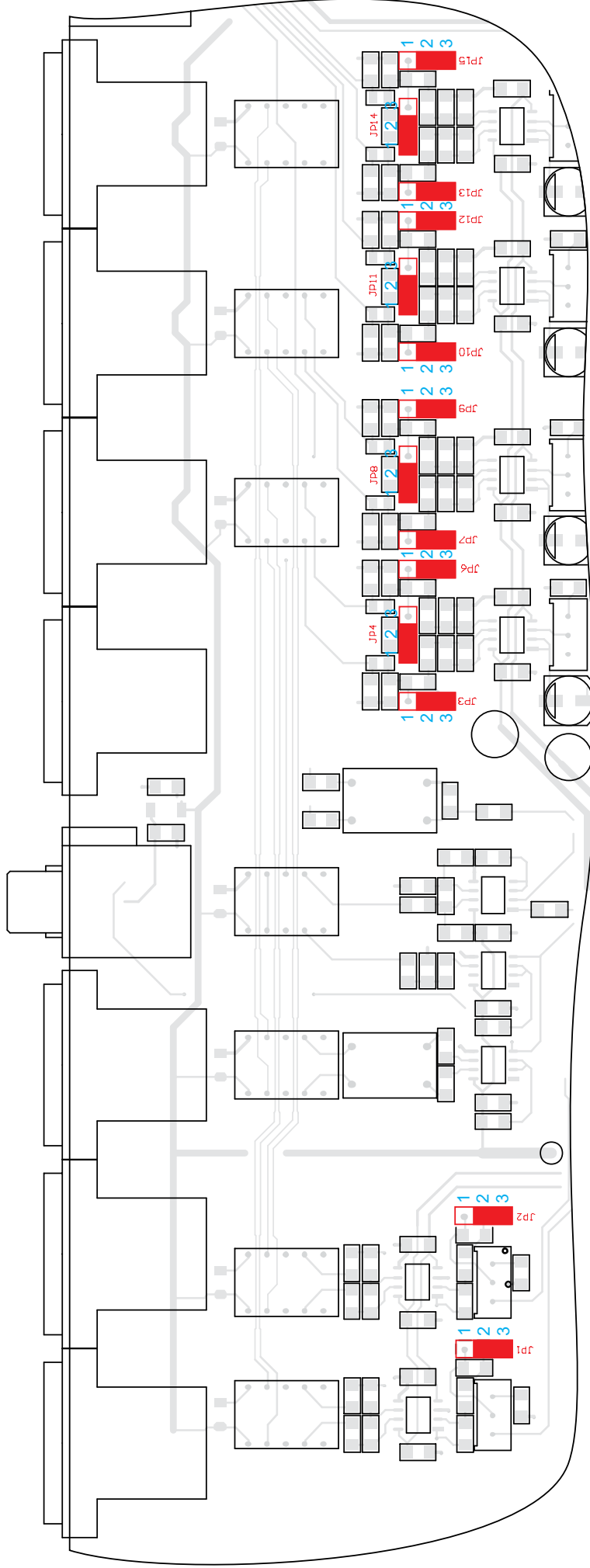
## DB8008 JUMPERS LOCATION



$\begin{matrix} 1 & 2 & 3 \\ \text{[Red Box]} & \text{[White Box]} & \text{[White Box]} \end{matrix} = 10 \text{ k}\Omega$   
 $\begin{matrix} 1 & 2 & 3 \\ \text{[White Box]} & \text{[Red Box]} & \text{[Red Box]} \end{matrix} = 600 \Omega$

$\begin{matrix} 1 & 2 & 3 \\ \text{[White Box]} & \text{[Red Box]} & \text{[Red Box]} \end{matrix} = 0 \text{ dBu}$   
 $\begin{matrix} 1 & 2 & 3 \\ \text{[Red Box]} & \text{[Red Box]} & \text{[Red Box]} \end{matrix} = +18 \text{ dBu}$

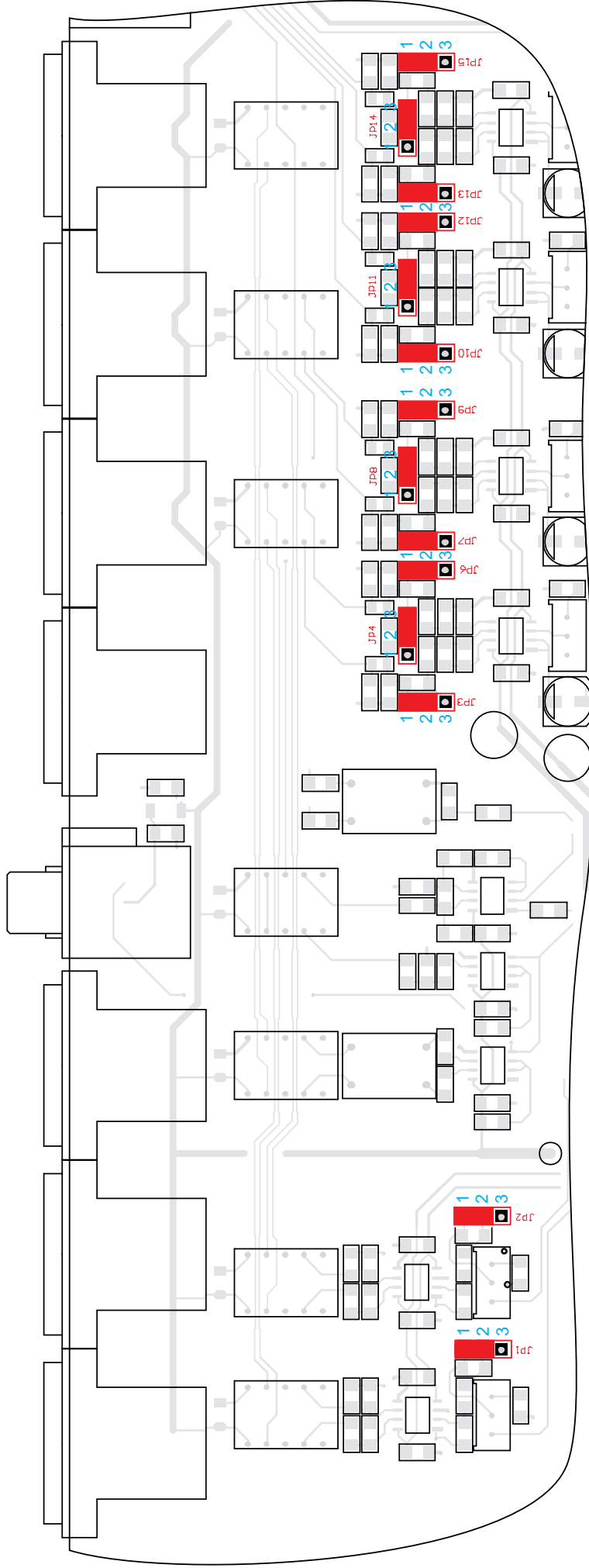
## DB8008 CONFIGURATION WITH IMPEDANCE 10kΩ AND 0dBu ANALOG INPUT AND OUTPUT RANGE



$\begin{matrix} 1 & 2 & 3 \\ \text{JP2} \\ \text{JP1} \end{matrix}$  = 10 kΩ  
 $\begin{matrix} 1 & 2 & 3 \\ \text{JP11, JP14} \end{matrix}$  = 600 Ω

$\begin{matrix} 1 & 2 & 3 \\ \text{JP1, JP2,} \\ \text{JP3, JP6, JP7, JP9,} \\ \text{JP10, JP12, JP13, JP15} \end{matrix}$  = 0 dBu  
 $\begin{matrix} 1 & 2 & 3 \\ \text{JP4, JP8,} \\ \text{JP11, JP14} \end{matrix}$  = +18 dBu

## DB8008 CONFIGURATION WITH IMPEDANCE 600Ω AND +18dBu ANALOG INPUT AND OUTPUT RANGE



$\begin{matrix} 1 & 2 & 3 \\ \text{[Red]} & \text{[White]} & \text{[Red]} \end{matrix} = 10 \text{ k}\Omega$   
 $\begin{matrix} 1 & 2 & 3 \\ \text{[Red]} & \text{[Red]} & \text{[Red]} \end{matrix} = 600 \Omega$

$\begin{matrix} 1 & 2 & 3 \\ \text{[White]} & \text{[Red]} & \text{[Red]} \end{matrix} = 0 \text{ dBu}$   
 $\begin{matrix} 1 & 2 & 3 \\ \text{[Red]} & \text{[Red]} & \text{[Red]} \end{matrix} = +18 \text{ dBu}$

## APPENDIX B

### HOW SHOULD I CONFIGURE THE CONNECTION BETWEEN MY DEVA DEVICE AND AN FTP CLIENT?

---

In order for a connection to be established the following setting should be applied:

#### 1. FTP Server Settings

The built-in FTP Server has four important parameters that should be configured: Command Port, Data Port, User name and Password. These parameters are to be used in the FTP client's connection configuration. Further information on how to change the FTP Server's settings and their respective default values can be found in the device's User manual.

**WE RECOMMEND** the usage of FileZilla (<https://filezilla-project.org>). This is a widespread open source software distributed free of charge, hence available for downloading from the Internet.

**NOTE:** The FTP Server can manage only one connection at a time. The FTP Server works in Passive mode. Hence, the FTP Client should also be set in passive mode.

#### 2. IP Router and Port Translation Settings

If the connection to the device is made through a Network address translation (NAT) router or firewall, the port forwarding feature of the router should be configured. The port forwarding is usually set in the firewall section of the router's menu. As each router has different port forwarding procedure, we recommend you to refer to its complete manual. To allow proper data flow through the router, the FTP Command and FTP Data ports should be open.

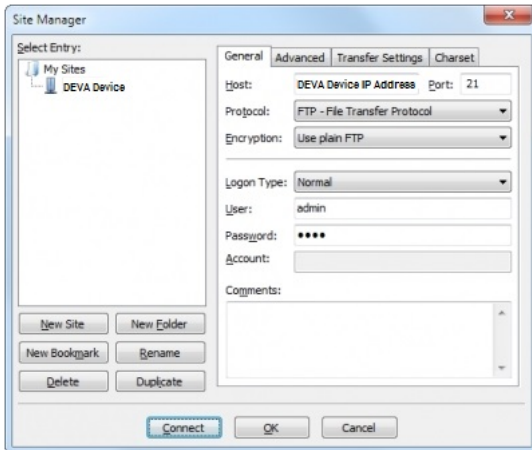
**NOTE:** The FTP port numbers to be used in the port forwarding feature configuration can be found in the device.



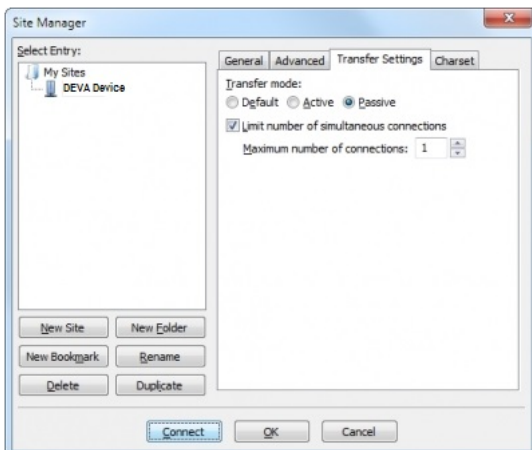
### 3. Example of FTP Client (FileZilla) Settings

In some cases, FileZilla's "Quick connect" feature is not able to connect with the DEVA unit. That is why we recommend the device to be assigned in the program manually.

Enter the FTP Client and go to: **File > Site manager > New Site**. A dialog box requiring obligatory information about the device will appear. Fill in the needed information and press "OK".



Select "Transfer Settings" sub-menu and apply the settings as shown below:



## WARRANTY TERMS AND CONDITIONS

**I. TERMS OF SALE:** DEVA Broadcast Ltd. products are sold with an understanding of “full satisfaction”; that is, full credit or refund will be issued for products sold as new if returned to the point of purchase within 30 days following their receipt, provided that they are returned complete and in an “as received” condition.

**II. CONDITIONS OF WARRANTY:** The following terms apply unless amended in writing by DEVA Broadcast Ltd.

**A.** The Warranty Registration Card supplied with this product must be completed and returned to DEVA Broadcast Ltd. within 10 days of delivery.

**B.** This Warranty applies only to products sold “as new.” It is extended only to the original end-user and may not be transferred or assigned without prior written approval by DEVA Broadcast Ltd.

**C.** This Warranty does not apply to damage caused by improper mains settings and/or power supply.

**D.** This Warranty does not apply to damage caused by misuse, abuse, accident or neglect. This Warranty is voided by unauthorized attempts at repair or modification, or if the serial identification label has been removed or altered.

**III. TERMS OF WARRANTY:** DEVA Broadcast Ltd. products are warranted to be free from defects in materials and workmanship.

**A.** Any discrepancies noted within TWO YEARS of the date of delivery will be repaired free of charge, or the equipment will be replaced with a new or remanufactured product at DEVA Broadcast Ltd. option.

**B.** Parts and labor for factory repair required after the two-year Warranty period will be billed at prevailing prices and rates.

### **IV. RETURNING GOODS FOR FACTORY REPAIR:**

**A.** Equipment will not be accepted for Warranty or other repair without a Return Material Authorization (RMA) number issued by DEVA Broadcast Ltd. prior to its return. An RMA number may be obtained by calling the factory. The number should be prominently marked on the outside of the shipping carton.

**B.** Equipment must be shipped prepaid to DEVA Broadcast Ltd. Shipping charges will be reimbursed for valid Warranty claims. Damage sustained as a result of improper packing for return to the factory is not covered under terms of the Warranty and may occasion additional charges.

## PRODUCT REGISTRATION CARD

- All fields are required, or warranty registration is invalid and void

Your Company Name \_\_\_\_\_

Contact \_\_\_\_\_

Address Line 1 \_\_\_\_\_

Address Line 2 \_\_\_\_\_

City \_\_\_\_\_

State/Province \_\_\_\_\_ ZIP/Postal Code \_\_\_\_\_

Country \_\_\_\_\_

E-mail \_\_\_\_\_ Phone \_\_\_\_\_ Fax \_\_\_\_\_

Which DEVA Broadcast Ltd. product did you purchase? \_\_\_\_\_

\_\_\_\_\_  
\_\_\_\_\_

Product Serial # \_\_\_\_\_

Purchase date \_\_\_\_ / \_\_\_\_ / \_\_\_\_ Installation date \_\_\_\_ / \_\_\_\_ / \_\_\_\_

\_\_\_\_\_  
Your signature\*

\*Signing this warranty registration form you are stating that all the information provided to DEVA Broadcast Ltd. are truth and correct. DEVA Broadcast Ltd. declines any responsibility for the provided information that could result in an immediate loss of warranty for the above specified product(s).

**Privacy statement: DEVA Broadcast Ltd. will not share the personal information you provide on this card with any other parties.**